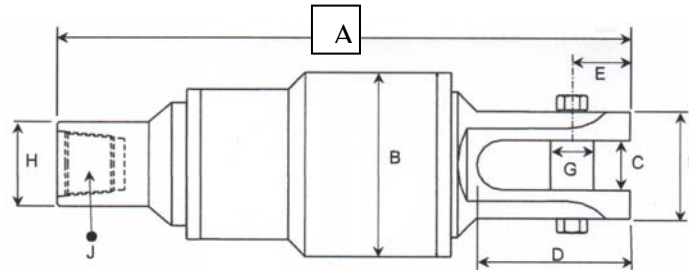
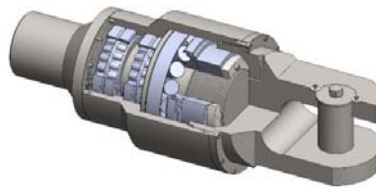




BIG Rig Swivels 44T-550T



SlimDril offer a full range of Big Rig Swivels, manufactured in Europe using heavy duty SKF Bearings.

The Capacity listed is the dynamic capacity of the bearing not just the strength of the supporting steelwork

- Swivels are manufactured from 4145 High Tensile Steel
- One piece Shaft and Clevis
- Box to Clevis or Clevis to Clevis Design
- Side Grease point with sealed system keeping Bentonite out.

Part No.	Size		A	B	C	D	E	F	G	H	J	Bearing	Maximum	Maximum	Ship Kg
													Dynamic kNUST	Static kNUST	
10-044	44	mm	610	165.0	54.0	160.0	62.0	126.0	44.0	120.0	3 1/2" IF	29412	390	915	75kg
	US Tons	inch	24.02	6.50	2.13	6.30	2.44	4.96	1.73	4.72			44	103	
10-058	58	mm	722	185.0	70.0	197.0	65.0	140.0	54.0	159.0	4 1/2" IF	29414	520	1250	110kg
	US Tons	inch	28.43	7.28	2.76	7.76	2.56	5.51	2.13	6.26			58	141	
10-083	83	mm	847	225.0	83.0	237.5	91.0	170.0	63.0	159.0	4 1/2" IF	29417	735	1800	160kg
	US Tons	inch	33.35	8.86	3.27	9.35	3.58	6.69	2.48	6.26			83	202	
10-110	110	mm	899	260.0	83.0	235.0	90.0	170.0	63.0	159.0	4 1/2" IF	29420	980	2500	200kg
	US Tons	inch	35.39	10.24	3.27	9.25	3.54	6.69	2.48	6.26			110	281	
10-154	154	mm	978	315.0	89.0	262.0	102.0	180.0	75.6	159.0	4 1/2" IF	29424	1370	3450	290kg
	US Tons	inch	38.50	12.40	3.50	10.31	4.02	7.09	2.98	6.26			154	388	
10-210	210	mm	1174	380.0	102.0	320.0	120.2	220.0	89.0	178.0	5 1/2" FH	29430	1860	5100	525kg
	US Tons	inch	46.22	14.96	4.02	12.60	4.73	8.66	3.50	7.01			210	573	
10-265	265	mm	1303	430.0	102.0	321.0	120.0	240.0	89.0	229.0	6 1/4" FH	29434	2360	6550	750kg
	US Tons	inch	51.30	16.93	4.02	12.64	4.72	9.45	3.50	9.02			265	736	
10-320	320	mm	1424	470.0	127.0	398.0	159.0	280.0	114.0	229.0	6 3/4" FH	29438	2850	8000	1150kg
	US Tons	inch	56.06	18.50	5.00	15.67	6.26	11.02	4.49	9.02			320	899	
10-382	382	mm	1460	530.0	127.0	398.0	159.0	300.0	114.0	275.0	6 3/4" FH	29448	3400	10200	1380kg
	US Tons	inch	56.54	20.86	5.00	15.67	6.26	11.81	4.49	8.99			382	1147	
10-550	550	mm	1642	600.0	156.0	452.0	190.0	350.0	150.0	280	6 3/4" FH	29456	4900	15300	1710kg
	US Tons	inch	64.65	23.62	6.14	17.80	7.48	13.78	5.91	11.02			551	1720	

Slimdril International Ltd

Unit 1 Bessemer Way, Harfreys Industrial Estate, Great Yarmouth Norfolk NR31 0LX
 United Kingdom
 Tel +44 1493 656145
www.slimdrill.com
sdi@slimdril.co.uk