



Unit 6 & 7 Leyland Court – Lowestoft – Suffolk – NR32 2EP

T. + 44 1493 656 145

E. enquiries@slimdril.com

W. www.slimdril.com

[in](https://www.linkedin.com/company/slimdril-international) www.linkedin.com/company/slimdril-international



CALL US NOW: TEL +44 (0) 1493 656145



WHO WE ARE

For over 30 years SlimDril has been a leading Guidance service and Tooling company providing products, training, and advice to the UK, European and Worldwide HDD markets.

SlimDril began business as a provider of mud motors for the Oil and Gas Industry focusing on downhole tooling. In the 1990's we progressed into Guidance Services with the addition of Wireline steering tools.

2018 saw some big changes for the company as we acquired new proprietors and a new focus on the import and distribution of quality equipment for the Horizontal Directional Drilling industry.

OUR GOAL:

**TO BE THE LEADING HDD SERVICE COMPANY IN THE
WORLD PROVIDING A ONE STOP SHOP FOR DRILLING
CONTRACTOR REQUIREMENTS**



TABLE OF CONTENTS

- DRILL BITS
- MUD MOTORS
- SHOCK TOOLS & JETTING ASSEMBLIES
- GUIDANCE SERVICE -STEERING TOOLS, GST, WST
- HDD WIRELINE & ACCESSORIES
- REAMERS
- FLY CUTTERS
- CENTRALISERS
- HOLE OPENERS
- SWIVELS
- DRILL PIPE AND NON MAG COLLARS
- HUNTING PRODUCTS
- MUDD-DRY
- PIPE WRENCHES & ACCESSORIES
- OTHER SERVICES



Tricone Milled Tooth Drill Bits

For use in softer formations such as Chalks, Mudstones and soft shales



Typically stocked sizes

Diameter (Inches)	Connection (Inches)
4"	2 3/8" API Reg
4 3/4"	2 7/8" API Reg
5 1/2"	2 7/8" API Reg
6 1/2"	3 1/2" API Reg
8 1/2"	4 1/2" API Reg
9 7/8"	6 5/8" API Reg
10 5/8"	6 5/8" API Reg
12 1/4"	6 5/8" API Reg
14 3/4"	6 5/8" API Reg
17 1/2"	6 5/8" API Reg

Tricone TCI Drill Bits

We stock Tungsten Carbide Insert (TCI) Type Bits in the popular sizes from 4 3/4" up to 22" diameter for drilling in all rock types from the softest to the very hardest formations



Typically stocked sizes

Diameter (Inches)	Connection (Inches)
4"	2 3/8" API Reg
4 3/4"	2 7/8" API Reg
5 1/2"	2 7/8" API Reg
6 1/2"	3 1/2" API Reg
8 1/2"	4 1/2" API Reg
9 7/8"	6 5/8" API Reg
10 5/8"	6 5/8" API Reg
12 1/4"	6 5/8" API Reg
14 3/4"	6 5/8" API Reg
17 1/2"	6 5/8" API Reg

HDD PDC Drill Bits

PDC Bits are ideally suited to rock that is 28,000PSI (200 MPA) or less. Their durable designs are specifically designed for HDD, very high rates of penetration.

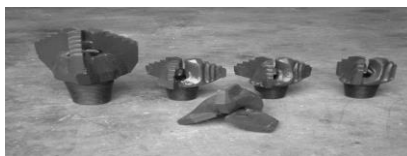


Typically stocked sizes

Diameter (Inches)	Connection (Inches)
4"	2 3/8" API Reg
4 3/4"	2 7/8" API Reg
5 1/2"	2 7/8" API Reg
6 1/2"	3 1/2" API Reg
8 1/2"	4 1/2" API Reg
9 7/8"	6 5/8" API Reg
10 5/8"	6 5/8" API Reg
12 1/4"	6 5/8" API Reg
14 3/4"	6 5/8" API Reg
17 1/2"	6 5/8" API Reg

Drag Bits

The drag bit consists of two main cutting blade designs, ie. step type and chevron. This type of bit is usually provided with between 3-6 blades and the diameter is not restricted. The drag bit has fixed cutter blades which have tungsten carbide inserts fitted on the cutting face, these can be aggressive in a variety of formations, i.e. sands, clays, mudstone, shale, marl. This is an economical bit which is usually ran with medium to fast speed downhole motors and can be provided with a nozzled port for jetting bit.



Diameter (Inches)

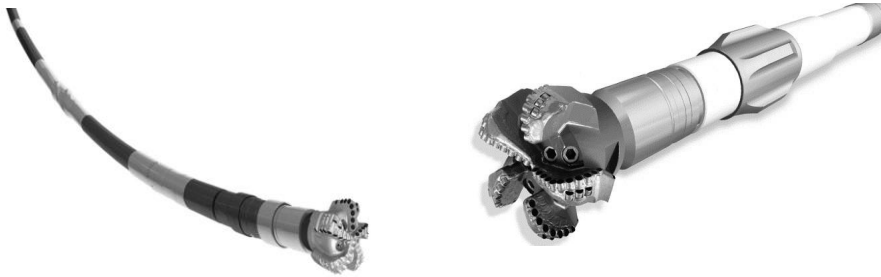
Connection (Inches)

Diameter (Inches)	Connection (Inches)
4 3/4"	2 7/8" API Reg
5 1/2"	2 7/8" API Reg
6 1/2"	3 1/2" API Reg
8 1/2"	4 1/2" API Reg
9 7/8"	6 5/8" API Reg
12 1/4"	6 5/8" API Reg

Mud Motors

SlimDril offer a full range of Mud motors from 1 ½" to 11 ¼" diameter for sale or rental. Our motors offer the drilling contractor superb performance and reliability, with excellent back up and first class service and inspection facilities.

SlimDril Mud motors are state of the art design using as many common parts as possible to ensure repair costs are kept as low as possible.



Imperial Specifications

O.D. (Inches)	Lobe Config.	No. of Stages	Length (feet)	Recommended Bit Size	Pump Rate (gpm)		Bit Speed (rpm)		Differential (psi)	Torque (ft. lbs)	Top Conn.	Bottom Conn.
					Min	Max	Min	Max				
3.3/4"	7/8	2.0	9.7	4.1/2" - 5.1/2"	70	120	110	225	435	450	2.7/8" Reg	2.7/8" Reg
3.3/4"	4/5	3.5	17.4	4.1/2" - 5.7/8"	70	160	100	260	500	720	2.7/8" Reg	2.7/8" Reg
3.3/4"	7/8	2.3	17.4	4.1/2" - 5.7/8"	70	160	50	130	370	770	2.7/8" Reg	2.7/8" Reg
4.3/4"	5/6	3.0	15.8	6" - 7.7/8"	100	250	115	290	450	850	3.1/2" IF	3.1/2" Reg
4.3/4"	7/8	2.2	17.8	6" - 7.7/8"	100	250	56	140	350	1090	3.1/2" IF	3.1/2" Reg
6.3/4"	7/8	3.0	21.0	8.1/2" - 9.7/8"	300	600	88	175	480	3300	4.1/2" IF	4.1/2" Reg
6.3/4"	8/9	3.0	21.0	8.1/2" - 9.7/8"	190	400	56	115	500	3550	4.1/2" IF	4.1/2" Reg
8"	9/10	2.9	21.4	9.7/8" - 12.1/4"	290	500	70	120	500	3530	6.5/8" Reg	6.5/8" Reg
9.5/8"	5/6	3.0	26.3	12.1/4" - 17.1/2"	600	1200	68	135	450	8800	6.5/8" Reg	6.5/8" Reg
11.1/4"	6/7	3.0	23.0	14.3/4" - 26"	600	1200	60	120	470	12870	7.5/8" Reg	7.5/8" Reg

Shock Tools

The Downhole Shock Tool protects critical BHA components from the extreme vibration created when drilling. Shock Tools are typically placed in close proximity to the drill bit. This will extend the functional life of the bit by reducing bit bounce and minimizing the dynamic impact loads on the bearings and/or cutters, in turn increasing the rate of penetration (ROP)

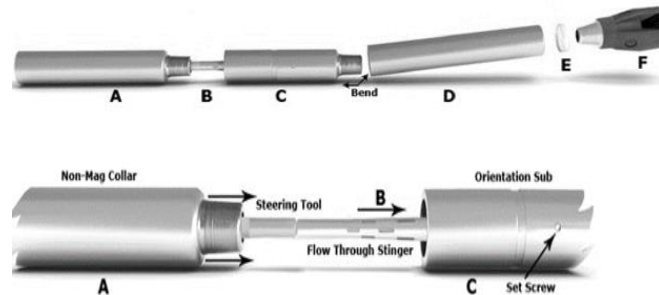


Jetting Assemblies

These are used to provide directional capabilities through a variety of soils. They allow the driller to push the drill string resulting in a direction change due to the geometry of the assembly.

A standard jetting assembly consists of :-

A is the Non mag drill collar, **B** is the steering tool, **C** is the orienting Sub, **D** is the bent sub, **E** are the shims, **F** is a Sealed bearing Milled tooth Bit.



SlimDril offer all typical size jetting assemblies and also a full range of "Shark head" Jetting tools with changeable plates that can be used to adjust the aggressiveness of the steering in softer formations.

Guidance Services

SlimDril's professional Guidance engineers are able to run **all types** of Wireline Steering tools, including the latest Drillguide Gyro steering tool system.

Since forming in 1982 and with over 100-years of combined experience in the HDD industry, SlimDril's personnel have been involved with some of the most challenging projects undertaken to-date. All Engineers are trained in the latest technology and are considered some of the best in the industry. When combined with SlimDril's proven downhole tool technology, these experienced personnel offer the customer a high level of confidence and professionalism.



The DrillGuide Gyro Steering Tool (GST) was developed to eliminate these problems and achieve greater accuracy. It was decided to combine new technologies, in which gyroscopes play an important role. This technique does not depend on the magnetic north and is insensitive to magnetic disturbances. The advantages of this approach translates into a reliable system, that is able to perform under virtually all conditions. The system is resilient to vibrations and practice shows that a pilot drilling, performed with a GST, is completed much sooner than with previous systems.

The DrillGuide GST is not effected by external disturbances, there is no involvement from external magnetic field interference. Railways, bridges, pipelines with or without cathodic protection and high voltage cables. www.drillguide.com



HDD Wireline and Accessories

HDD wire provide reliable electrical signals from the steering tool during the directional drilling process.

SlimDril's specially selected 7 strand wire is well renowned as being the best wire in the HDD industry with its special extra thickness insulation. Whether you using a cable sonde, Paratrack tool, Tensor tool or Gyro, SlimDril wire is the best in the business!

SlimDril HDD wireline is available in 10AWG/6mm² and 8AWG/10 mm² in lengths of either 305m 10AWG/6mm² or 152m 8AWG/10 mm²



Crimps/Connectors - 8 AWG or 10 AWG Crimps sold in packs of 100

Crimping Tools – Crimping pliers to suit 8 AWG or 10 AWG Crimps

Heatshrink – High quality 12-3mm with glue makes this the safest way to insulate drill wire



Wireline Steering Tool and Pressure Modules

SlimDril offer the Drilling Contractor a large range of conventional magnetic guidance wireline steering tools with the option of downhole Pressure monitoring . Our HDD proven range of steering tools utilise state of the art technology to steer the bore exactly where it is planned.



Wireline Spiders

These are used during the pilot hole drilling operations mainly during longer crossings of over 300m. The function of the wireline spider is to prevent any slack or stretched wire being forced down around the steering tool and getting in contact with the sharp centraliser blades or blown into the flow sub.

Wireline Spiders are located in the box connections and are suitable for both the 10AWG/6mm² and 8AWG/10 mm² drill wire. Typically a spider is placed at the end of the first non mag and every 150 – 250m behind depending on personal preference.

Sizes Available:-

7/8" IF, 1/2" IF, 1/2" Vermeer FS1, 1/2" IF, 6 5/8" FH, 5 1/2" FH 6, 5/8" Reg

Barrel Reamers

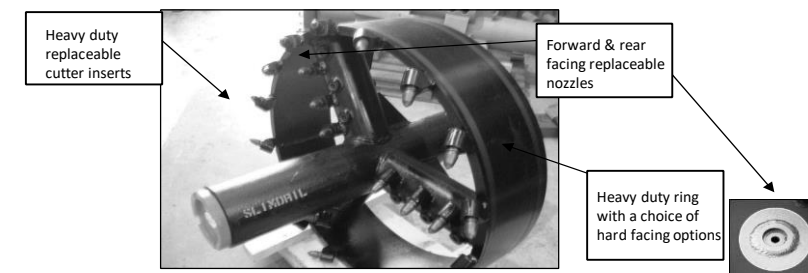
We can offer the drilling contractor a large range of Barrel Reamers manufactured to precise fabrication standards from the highest quality Materials. SlimDril's Barrel Reamers are ideally suited to soft formations such as Clays, Silts and compacted sands.

- Field replaceable cutting teeth
- Tough Rugged construction
- Replaceable Jet Nozzles
- Front and rear facing Nozzles
- Standard API threaded connections
- Independently inspected



12" Barrel Reamer 3 1/8" Mandrel 2 3/8" Reg Box x Pin	12" Barrel Reamer 4 1/8" Mandrel 2 7/8" IF Box x pin
14" Barrel Reamer 3 1/8" Mandrel 2 3/8" Reg Box x Pin	14" Barrel Reamer 4 1/8" Mandrel 2 7/8" IF Box x pin
16" Barrel Reamer 3 1/8" Mandrel 2 3/8" Reg Box x Pin	16" Barrel Reamer 4 1/8" Mandrel 2 7/8" IF Box x pin
18" Barrel Reamer 3 1/8" Mandrel 2 3/8" Reg Box x Pin	18" Barrel Reamer 4 1/8" Mandrel 2 7/8" IF Box x pin
20" Barrel Reamer 3 1/8" Mandrel 2 3/8" Reg Box x Pin	20" Barrel Reamer 4 1/8" Mandrel 2 7/8" IF Box x pin
22" Barrel Reamer 3 1/8" Mandrel 2 3/8" Reg Box x Pin	22" Barrel Reamer 4 1/8" Mandrel 2 7/8" IF Box x pin
24" Barrel Reamer 3 1/8" Mandrel 2 3/8" Reg Box x Pin	24" Barrel Reamer 4 1/8" Mandrel 2 7/8" IF Box x pin
28" Barrel Reamer 6 3/4" Mandrel 4 1/2" IF Box x pin	30" Barrel Reamer 6 3/4" Mandrel 4 1/2" IF Box x pin
32" Barrel Reamer 6 3/4" Mandrel 4 1/2" IF Box x pin	36" Barrel Reamer 6 3/4" Mandrel 4 1/2" IF Box x pin
42" Barrel Reamer 6 3/4" Mandrel 4 1/2" IF Box x pin	42" Barrel Reamer 8" Mandrel 6 5/8" FH Box x pin
48" Barrel Reamer 6 3/4" Mandrel 4 1/2" IF Box x pin	48" Barrel Reamer 8" Mandrel 6 5/8" FH Box x pin
60" Barrel Reamer 8" Mandrel 6 5/8" FH Box x pin	72" Barrel Reamer 8" Mandrel 6 5/8" FH Box x pin

12" Fly-Cutter Back Reamer 3 1/8" Mandrel 2 3/8" Reg Box x Pin	12" Fly-Cutter Back Reamer 4 1/8" Mandrel 2 7/8" IF Box x pin
14" Fly-Cutter Back Reamer 3 1/8" Mandrel 2 3/8" Reg Box x Pin	14" Fly-Cutter Back Reamer 4 1/8" Mandrel 2 7/8" IF Box x pin
16" Fly-Cutter Back Reamer 3 1/8" Mandrel 2 3/8" Reg Box x Pin	16" Fly-Cutter Back Reamer 4 1/8" Mandrel 2 7/8" IF Box x pin
18" Fly-Cutter Back Reamer 3 1/8" Mandrel 2 3/8" Reg Box x Pin	18" Fly-Cutter Back Reamer 4 1/8" Mandrel 2 7/8" IF Box x pin
20" Fly-Cutter Back Reamer 3 1/8" Mandrel 2 3/8" Reg Box x Pin	20" Fly-Cutter Back Reamer 4 1/8" Mandrel 2 7/8" IF Box x pin
22" Fly-Cutter Back Reamer 3 1/8" Mandrel 2 3/8" Reg Box x Pin	22" Fly-Cutter Back Reamer 4 1/8" Mandrel 2 7/8" IF Box x pin
24" Fly-Cutter Back Reamer 3 1/8" Mandrel 2 3/8" Reg Box x Pin	24" Fly-Cutter Back Reamer 4 1/8" Mandrel 2 7/8" IF Box x pin
28" Fly-Cutter Back Reamer 6 3/4" Mandrel 4 1/2" IF Box x pin	30" Fly-Cutter Back Reamer 6 3/4" Mandrel 4 1/2" IF Box x pin
32" Fly-Cutter Back Reamer 6 3/4" Mandrel 4 1/2" IF Box x pin	36" Fly-Cutter Back Reamer 6 3/4" Mandrel 4 1/2" IF Box x pin
42" Fly-Cutter Back Reamer 6 3/4" Mandrel 4 1/2" IF Box x pin	42" Fly-Cutter Back Reamer 8" Mandrel 6 5/8" FH Box x pin
48" Fly-Cutter Back Reamer 6 3/4" Mandrel 4 1/2" IF Box x pin	48" Fly-Cutter Back Reamer 8" Mandrel 6 5/8" FH Box x pin
60" Fly-Cutter Back Reamer 8" Mandrel 6 5/8" FH Box x pin	72" Fly-Cutter Back Reamer 8" Mandrel 6 5/8" FH Box x pin



Fly Cutters

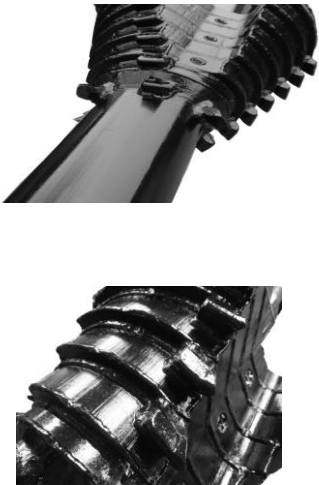
We can offer a large range of Fly Cutters manufactured from the highest quality materials and inspected independently to API Specifications. Fly Cutters are generally used to break up clay-type soils prior to compaction, SlimDril's range displays excellent cutting and displacement characteristics and are frequently used in conjunction with (in front of) the Barrel Reamer.

Hybrid Reamers

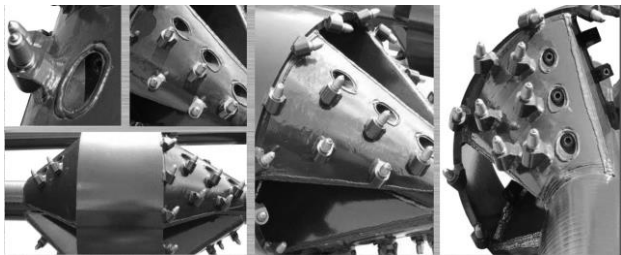
SlimDril are pleased to announce the latest in HDD developments the Hybrid Reamer.

The Hybrid Reamer is manufactured using modern materials and techniques to provide a single reamer with the advantages of a Fly Cutter and Barrel Reamer incorporated into one tool. Features include:

- AISI 4145H central mandrel & heavy duty construction
- 6.5/8" API FH, 5.1/2" API FH & NC50 connections
- Hollow Bodies to aid buoyancy
- Jet Nozzles connects directly to the central mandrel
- Replaceable TC Jet Nozzles
- Forward & Rear facing TC Jet Nozzles in "voids"
- Compatible with both Kennametal & Betek cutters



Example Sizes	
28" Hybrid Reamer 6 3/4" Mandrel 4 1/2" IF Box x pin	30" Hybrid Reamer 6 3/4" Mandrel 4 1/2" IF Box x pin
32" Hybrid Reamer 6 3/4" Mandrel 4 1/2" IF Box x pin	36" Hybrid Reamer 6 3/4" Mandrel 4 1/2" IF Box x pin
42" Hybrid Reamer 6 3/4" Mandrel 4 1/2" IF Box x pin	44" Hybrid Reamer 8" Mandrel 6 5/8" FH Box x pin
48" Hybrid Reamer 6 3/4" Mandrel 4 1/2" IF Box x pin	48" Hybrid Reamer 8" Mandrel 6 5/8" FH Box x pin
60" Hybrid Reamer 8" Mandrel 6 5/8" FH Box x pin	72" Hybrid Reamer 8" Mandrel 6 5/8" FH Box x pin



Stack Plate Reamers

We offer Fluted/Stack Plate Reamers for loose gravels and difficult ground conditions.

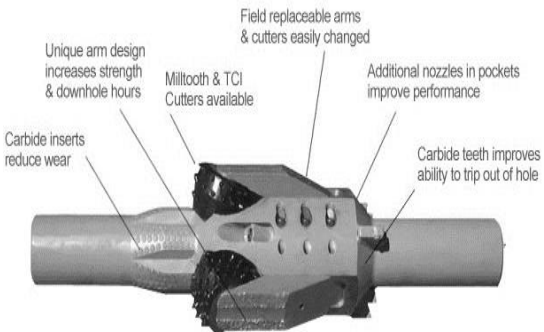
- 30 degree tapered body for highly effective cutting and compaction
- Available with a range of threads and back end connections
- Forward and rear facing jets with replacable nozzles
- TCI rock-cutting teeth or replacable pick teeth
- Fluted body for effective displacement of cuttings
- Available in a range of size 6" to 60"

RockReamer™

The RockReamer™ is the most versatile, cost effective hole opener for the HDD Industry. The unique design minimizes on-site inventory, lowering cost.

The RockReamer™ cuts downtime as easily as it cuts rock.

No more downtime waiting on new tools/cutters when the need to push ream occurs. It pushes or pulls with the same body and cutters, and one body opens to six sizes. Stronger than other hole openers. Increased on-bottom rotating time, minimizes cutter cost and trip time. Cutters and arms are easily changed in the field without the need for torches and welders.



Split Bit Rock Reamer

We offer a large range of heavy duty rock reamers manufactured to the highest quality materials and independently API inspected. Split Bit Reamers are manufactured from a choice of quality economical, premium or exception premium drill bits, MT or TCI.

Sizes available from 8" to 72" plus custom made tools.

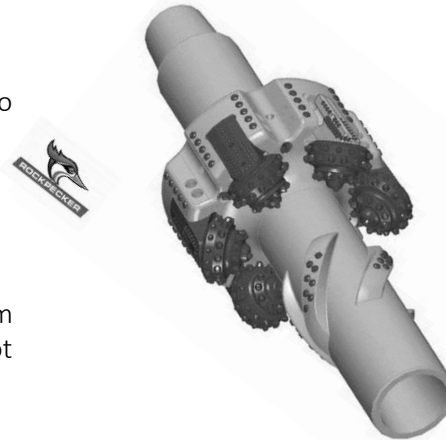


VRS Reamer

The Features and benefits of this type of reamer are :-

- Manufactured from One single piece of AISH 4140 still in a fully non welded construction reducing the possibility of cracking
- Unique "Dove Tail" insertion / Locking system allowing a large range of cutter types to be interchanged in the field, WOB on the reamer presses the cones into the body
- They are bi directional for pull or push reaming applications
- Some of the cutters are interchangeable with other bodies, for example the 12" and 15" tools have the same cutters as do the 18", 20" and 24" so single cutters can be replaced or sets taken from one to another
- The body can be 3D scanned, built up and Hard faced to as new locally in Nottingham
- Front and rear Tungsten carbide nozzles pointing in the direction of the drill string not at an angle
- Tungsten inserts on the wearing edges
- Rear cutting wings and tapered rear make the reamer easier to push out if required
- Made in UK
- Cutters are from Proven Tricone assemblies

Full inspection and material certs are provided with each tool once manufactured

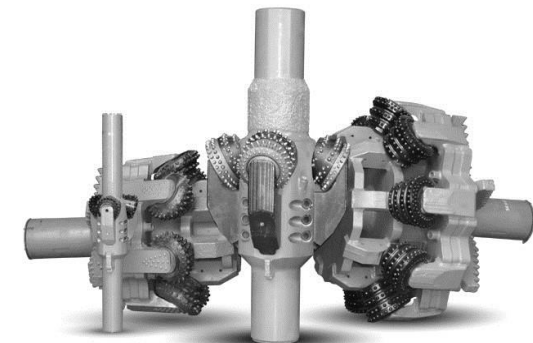


Rental RockReamer

We offer the Drilling Contractor a large range of Heavy Duty Rock Reamers from our R Type Range for rental on either a long or short term arrangement. Our current rental fleet of Bodies comprises of the following:

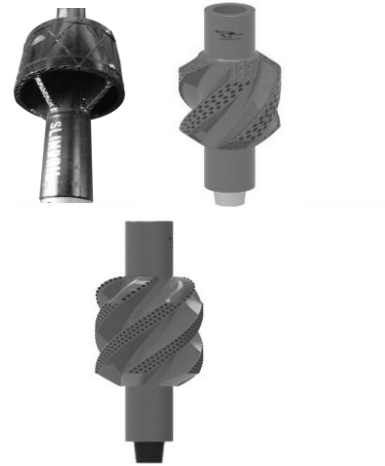
R4	Range 8 ½" to 12" Diameter
R6	Range 12" to 20" Diameter
R8	Range 16" to 26" Diameter
R17	Range 24" to 34" Diameter
R26	Range 32" to 42" Diameter
R36	Range 42" to 52" Diameter

All Reamer bodies are available with Milled tooth or TCI Cutters and are supplied with Arms, in addition all tools are independently inspected both before and after rental to API specification



Centralisers

We offer a large range of Centralisers specifically for HDD applications. Our Centralisers work in front of the hole opener and align the cutters in the centre of the pilot bore, ensuring a smooth round hole. This maximises the life of the Cutters and therefore increases productivity. Centralisers are built with the most exacting standards using the best quality materials. Single ring or one-piece blade type are available with either straight or spiral blades. Centralisers available for sale or rental.



Lo-Torque Hole Openers

Our Lo-Torque Hole openers incorporate field replaceable Milled Tooth (MT) and Tungsten Carbide Insert (TCI) cutters all with Sealed Journal bearings for extended life. Bodies accept up to 4 different cutter sizes and are available for rental or purchase.

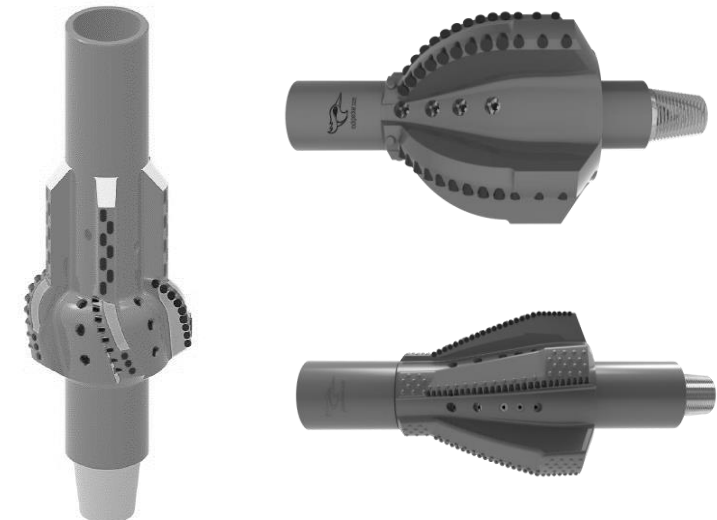
SIZE	Min. Pilot Hole (in)		No. of Cutters	Final Hole Size (in)	CUTTER WEIGHT (lb.ea)		BODY DIMS (in)			Connection
					MT	TCI	Lg (in)	OD (in)	Wt. (lb)	
LT-2	2.5"		3	6"	3	3	24"	2.5"	32	2" IF
LT-4	4.5"		3	8"	4	6	37"	3.5"	112	2 3/8" IF
				10"	8	10				
				12"	12	16				
LT-6	6.5"		3	12"	15	21	44"	4.5"	267	3 1/2" IF
				14"	23	30				
				16"	31	42				
LT-8	8.5"		3	16" - A	32	41	48.5"	6.5"	480	4 1/2" IF
				18" - B	47	61				
				20" - C	64	79				
				22" - D	80	100				
LT-16	16"		3	24" - A	32	41	53.5"	9.5"	1188	7 5/8" Reg
				26" - B	47	61				
				28" - C	64	79				
				30" - D	80	100				
LT-24	24"		4	32" - A	32	41	58.5"	9.5"	1952	7 5/8" Reg
				34" - B	47	61				
				36" - C	64	79				
				38" - D	80	100				
LT-32	32"		4	40" - A	32	41	58.5"	9.5"	2712	7 5/8" Reg
				42" - B	47	61				
				44" - C	64	79				
				46" - D	80	100				

PDC Hole Openers

When you purchase one of our PDC HDD reamers, you will find yourself with a high quality piece of solid steel designed to ream faster and smarter. These have also been custom manufactured to meet the requests of our customers. Some of the unique features include:

- No moving parts, just one single body
- Available in a great range of sizes up to 48"
- Cuts through rock at greater speeds
- No risk of losing a cone
- Virtually eliminates vibration
- Longer tool runs
- Proven in rock up to 28,000 PSI
- Fully repairable at our UK facility

9-1/2" - 12" Hole opener



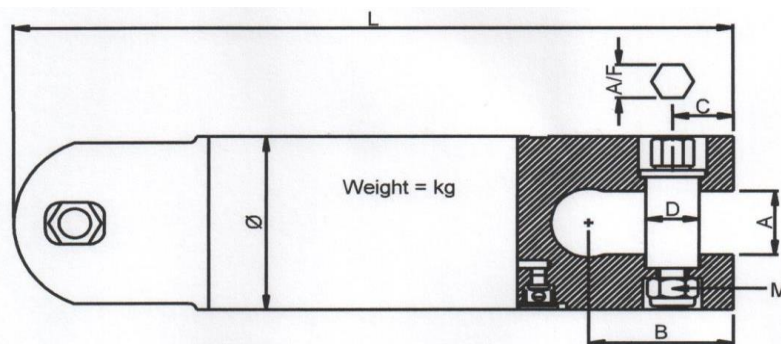
Small Rig Swivels 10T – 30T

SlimDril's range of Small Rig Swivels offers the Drilling Contractor a quality durable swivel at a competitive price.



SlimDril's Small rig range features :-

- Patented Sealing system
- One piece construction of shaft and Clevis
- Clevis to Clevis Design
- Side Grease Nipple for power Greasing



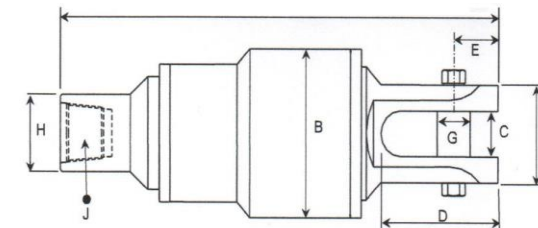
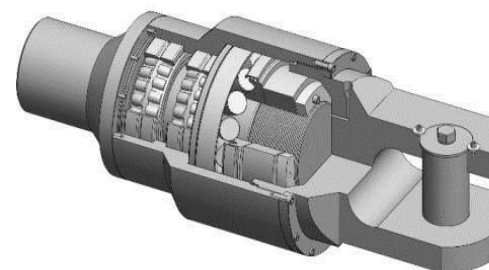
Swivel	Part No.	SWL lb	SWL kg	L	Ø	A	B	C	D	A/F	M	kg
10 US Ton	11-010	20,000	9000	340	80	38	67	25	25.4	17	m12	9
15 US Ton	11-015	30,000	13600	442	108	44	99	37.5	29	20	m16	22
20 US Ton	11-020	40,000	18100	473	125	46	95	40	35	24	m20	32
30 US Ton	11-030	60,000	27200	493	138	46	101	43	35	24	m24	41

All dimensions in mm, weights and dimensions subject to change without notice.



Big Rig Swivels 44T – 550T

We offer a full range of Big Rig Swivels, manufactured in Europe using heavy duty SKF Bearings.



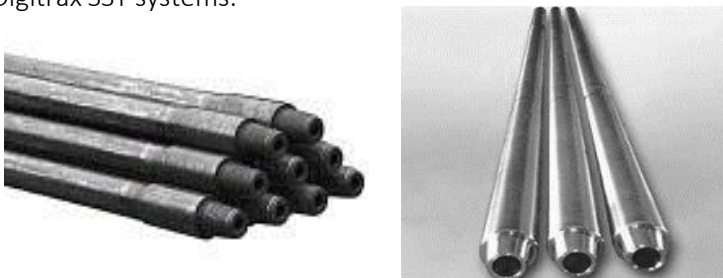
- The Capacity listed is the dynamic capacity of the bearing not just the strength of the supporting steelwork
- Swivels are manufactured from 4145 High Tensile Steel

Part No.	Size		A	B	C	D	E	F	G	H	J	Bearing	Maximum Dynamic kN/UST	Maximum Static kN/UST	Ship Kg
10-044	44	mm	610	165.0	54.0	160.0	62.0	126.0	44.0	120.0	3 1/2" IF	29412	390	915	75kg
		US Tons	inch	24.02	6.50	2.13	6.30	2.44	4.96	1.73	4.72		44	103	
10-058	58	mm	722	185.0	70.0	197.0	65.0	140.0	54.0	159.0	4 1/2" IF	29414	520	1250	110kg
		US Tons	inch	28.43	7.28	2.76	7.76	2.56	5.51	2.13	6.26		58	141	
10-083	83	mm	847	225.0	83.0	237.5	91.0	170.0	63.0	159.0	4 1/2" IF	29417	735	1800	160kg
		US Tons	inch	33.35	8.86	3.27	9.35	3.58	6.69	2.48	6.26		83	202	
10-110	110	mm	899	260.0	83.0	235.0	90.0	170.0	63.0	159.0	4 1/2" IF	29420	980	2500	200kg
		US Tons	inch	35.39	10.24	3.27	9.25	3.54	6.69	2.48	6.26		110	281	
10-154	154	mm	978	315.0	89.0	262.0	102.0	180.0	75.6	159.0	4 1/2" IF	29424	1370	3450	290kg
		US Tons	inch	38.50	12.40	3.50	10.31	4.02	7.09	2.98	6.26		154	388	
10-210	210	mm	1174	380.0	102.0	320.0	120.2	220.0	89.0	178.0	5 1/2" FH	29430	1860	5100	525kg
		US Tons	inch	46.22	14.96	4.02	12.60	4.73	8.66	3.50	7.01		209	573	
10-265	265	mm	1303	430.0	102.0	321.0	120.0	240.0	89.0	229.0	6 3/4" FH	29434	2360	6550	750kg
		US Tons	inch	51.30	16.93	4.02	12.64	4.72	9.45	3.50	9.02		265	736	
10-320	320	mm	1424	470.0	127.0	398.0	159.0	280.0	114.0	229.0	6 3/4" FH	29438	2850	8000	1150kg
		US Tons	inch	56.06	18.50	5.00	15.67	6.26	11.02	4.49	9.02		320	899	
10-382	382	mm	1460	530.0	127.0	398.0	159.0	300.0	114.0	275.0	6 3/4" FH	29448	3400	10200	1380kg
		US Tons	inch	56.54	20.86	5.00	15.67	6.26	11.81	4.49	8.99		382	1147	
10-550	550	mm	1642	600.0	156.0	452.0	190.0	350.0	150.0	280	6 3/4" FH	29456	4900	15300	1710kg
		US Tons	inch	64.65	23.62	6.14	17.80	7.48	13.78	5.91	11.02		551	1720	

Drill Pipe & Non Magnetic Drill Collars

We offer a range of high quality forged drill pipe for all American Augers, Ditch Witch, Vermeer as well as API drill pipe from 3 1/8" to 8" diameters, including Heavy weight.

To compliment this range of Drill pipe, SlimDril offer a large range of Non Magnetic drill collars that can be either purchased or rented for use with all types of wireline steering tools and Digitrax SST systems.



AVAILABLE SIZES - READY TO DEPLOY

2 7/8" OD (UTJ) x 2" ID
3 1/2" OD x 1 5/8" ID 4 1/8" OD x 2 1/8" ID

4 3/4" OD x 2 1/4" ID
6 1/4" OD x 2 1/4" ID
6 1/4" OD x 2 13/16" ID
6 1/2" OD x 2 1/4" ID
6 1/2" OD x 2 13/16" ID
7" OD x 2 13/16" ID 7 1/4" OD x 2 13/16" ID

7 3/4" OD x 2 13/16" ID
8" OD x 2 13/16" ID



The Hunting - HX-1TRN

Tired of breaking your back getting the drill head or backreamer onto your quick connect?

Introducing Hunting's new patented HX-1TRN™ quick connect.

- Minimize injuries installing tooling in the bore pit
- Increase your efficiency on the job site

With its Quad-Lead design, The Hunting HX-1TRN provides a thread pattern with a lead every ninety degrees so you have four places to start threading, as opposed to one place like all the others.

The HX-1TRN has adapters to fit all Manufacturers tooling.

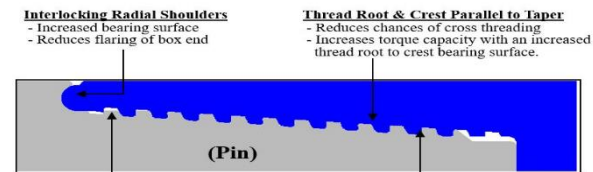
To learn more, visit YouTube and search HX-1TRN or scan the below bar code.

For more info, contact SlimDril, your UK & EIRE dealer.

We have in stock a full range of HIWS1 and HXT HDD Drill Pipe with all associated tooling which we can ship throughout the UK within 1-2 days.

HXT

HUNTING



Straight Cylinder Diameter
- Allows for thread run out
- Thread run out increases tension capacity
- Also reduces fatigue at critical area

Load Flank Hooked
- Hook thread controls hoop stress and increases torque capacity

Proprietary Patented Design can only be Manufactured by Hunting

Larger inside diameter allows increased mud flow



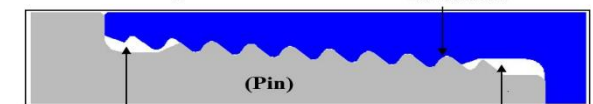
HIWS1

HUNTING

Ease of make and break
- Steep taper for deep stabbing
- Fast pitch for quick make-up and break-out

Dual-Shoulder
- Increase Torque
- Decrease Flaring

Coarse Rugged Threads
- Fast make up
- 45° stab flank
- 30° load flank



Thread Undercut
- Allows threads to run out
- Reduces fatigue

Thread Undercut
- Allows thread to run out
- Reduces fatigue
- Pin pilot protects first thread from damage and allows identification markings
Example: IW-1234 02/10 (old)
HIWS-6438 (new)

NEED QUICK CONNECTS TO MAKE YOUR PROJECTS MORE EFFICIENT?

We now stock Hunting starter rods to provide quick installation or removal of drill heads, reamers etc... Starter rods give you a non-torqued connection to downhole tool for safely installing and removing of the tool.

Our Hunting Hex Collar connection sets the industry standard! They are available with or without hard facing, they feature a machined hole protecting the collar locking bolt.

All tooling thoughtfully designed and precision manufactured to fit together and work together. The result is seamless drill string engineered to perform.



Hunting Drill Pipe Spec	Stock No
2.060" Drill Pipe c/w 1.94-4. 10@ Long	206-1.94-4
2.375" Drill Pipe c/w #600 Connections. 10' Long	238-#600
2.375" Drill Pipe c/w 2.114-4 Connections. 9.8' Long	238-2114-4
2.375" Drill Pipe c/w HIWS1-600 Connections. 10' Long	238-HIWS1-600
2.375" Drill Pipe c/w HIWS1-650 Connections. 10' Long	238-HIWS1-650
2.375" Drill Pipe c/w HXT-602 Connections. 10' Long	238-HXT-602
2.625" Drill Pipe c/w HIWS1-700 Connections 10' Long	258-HIWS1-700
2.875" Drill Pipe c/w HIWS1-900 Connections.15' Long	278-HIWS1-900
3.500" Drill Pipe c/w HXT-802 Connections. 15' Long	350-HXT-802
Adapter-LPT 2.125" LPT pin x 2.375" Reg Pin	ADAP2375
Adaptor #802 Box x 2 7/8" IF Pin	ADAP802BP
Adaptor 2 7/8" IF Box x #802 Pin	ADAP802PB
Collar-LPT 2.125" LPT 2.500" HEX p/n H25006	COLLAR
LPT Accessories 1/2-13 x 1/2 Cap Screw 2.125" LPT p/n H0004	LPT ACCES
LPT Accessories 1-1/2 x 070 O-ring 2.125" LPT p/n 480801	LPTACCE
Starter Rod-LPT 2.125 LPT 600Connection p/n 234826001	SROD-600
Starter Rod-LPT 2.125LPT 602(HXT) Connection p/n 284148001	SROD-602
Starter Rod-LPT 2.125" LPT 650 Connection p/n 296309646	SROD-650
Starter Rod-LPT 2.125" LPT 700 Connection p/n 296321280	SROD-700

We offer these very niche tools which are efficient and cost effective, 4" Hunting Jetting Assembly with a 5.5" Mill Tooth Bit attached. It also has a built in sonde housing.



SCAN TO WATCH THE
NEW HX-1TRN VIDEO



Whilst liquid solidification isn't a new concept, MuDD-Dry is an environmentally friendly, cost effective solution to solidify liquid waste for efficient transport and disposal. SlimDril are working in collaboration with Greenglove to deliver this new and innovative product to the HDD Industry. SlimDril are the sole distributors for MuDD-Dry in this sector within the UK and Europe. Thus far, our customers are thrilled with its performance and are confident it could become a market leader for Liquid Waste Management.

The benefits of using MuDD-Dry:

- Immediately converts liquid/semi-solid waste streams to a solid (<30 min)
- Works effectively with bulk mixing applications
- Creates a dry, stackable solid for easy handling
- Can be used in clean fill applications significantly reducing disposal costs
- Landfill friendly
- Suitable for manually mixing in small or large batches

MuDD-Dry is proven to be a more cost effective solution than cement and other products, it's also much better for the environment. See MuDD-Dry in action:

<https://www.youtube.com/watch?v=oTpRUQhDw-Q>



Liquid



During Mixing



After Mixing



Result

Pipe Wrenches

SlimDril can supply a full range of high quality rigid pipe wrenches used in the HDD Industry.
Aluminium Pipe Wrenches are the preferred choice to HDD Contractors due to the lightweight and strong design.

Lightweight Pipe Wrenches



Catalog Number	Model No.	Description	Nom. Size		Pipe Capacity		Weight	
			in.	mm	in.	mm	lb.	kg
31090	810	Aluminum Straight Pipe Wrench	10	250	1 1/2	40	1	0.4
47057	812	Aluminum Straight Pipe Wrench	12	300	2	50	2 1/2	1.1
31095	814	Aluminum Straight Pipe Wrench	14	350	2	50	2 1/2	1.1
31100	818	Aluminum Straight Pipe Wrench	18	450	2 1/2	65	3 3/4	1.7
31105	824	Aluminum Straight Pipe Wrench	24	600	3	80	6	2.7
31110	836	Aluminum Straight Pipe Wrench	36	900	5	125	11	5.0
31115	848	Aluminum Straight Pipe Wrench	48	1200	6	150	18 1/2	8.4

Nom. Size = nominal length of handle
Nom. Pipe Capacity = maximum nominal diameter of steel pipe

Heavy Duty Pipe Wrenches

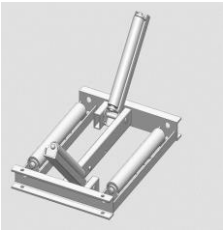


Catalog Number	Model No.	Description	Nom. Size		Pipe Capacity		Weight	
			in.	mm	in.	mm	lb.	kg
31000	6	Heavy-Duty Straight Pipe Wrench	6	150	3/4	20	1/2	0.2
31005	8	Heavy-Duty Straight Pipe Wrench	8	200	1	25	3/4	0.3
31010	10	Heavy-Duty Straight Pipe Wrench	10	250	1 1/2	40	1 3/4	0.6
31015	12	Heavy-Duty Straight Pipe Wrench	12	300	2	50	2 3/4	1.2
31020	14	Heavy-Duty Straight Pipe Wrench	14	350	2	50	3 1/2	1.6
31025	18	Heavy-Duty Straight Pipe Wrench	18	450	2 1/2	65	5 3/4	2.6
31030	24	Heavy-Duty Straight Pipe Wrench	24	600	3	80	9 3/4	4.4
31035	36	Heavy-Duty Straight Pipe Wrench	36	900	5	125	19	8.7
31040	48	Heavy-Duty Straight Pipe Wrench	48	1200	6	150	34 1/4	15.6
31045	60	Heavy-Duty Straight Pipe Wrench	60	1500	8	200	51 1/4	23.3

Nom. Size = nominal length of handle
Nom. Pipe Capacity = maximum nominal diameter of steel pipe

Pipe Rollers

- Folding Stackable Rollers
- Four steel rollers
- Sealed roller bearings
- Small, medium and large modular designs
- For use with all pipe types up to 60" diameter
- Easily transportable and economical to ship overseas
- Easily repaired if damaged
- Up to 8T static load on each roller
- Galvanised finish for durability



Pipe Pulling Accessories



Universal joints made to suit your individual needs, each part made from a solid piece of 4145 steel

Towing Heads;

- High Tensile Drop Forged Steel Eyebolts.
- Proven Tooth Profile for high gripping power.
- Solid Aluminium Noses on 125 mm to 280mm Huge range of sizes from 20mm to 355mm (See large towing heads for 400mm+)
- 1" to 12" IPS, JIS etc.
- All popular sizes available from stock.
- Accommodates SDR*11 to 17.6, other sizes can be made on request



Breakout Tongs

SlimDril supply a full range of high quality
Gearench Chain tongs used in the HDD industry.



PETOL™ Bull Tongs				
CATALOG NO.	O.D.*	GRIPPING WIDTH	HANDLE LENGTH**	WEIGHT***
LA155-16	3-1/2" - 16"	4.38"	32"	67 lbs.
LA16H	4" - 16"	6.88"	36"	96 lbs.
LA116-C09	6" - 17"	7.55"	9"	95 lbs.
LA116-C18	6" - 17"	7.55"	18"	124 lbs.
LA116-23	6" - 17"	7.55"	23"	118 lbs.
LA116-28	6" - 17"	7.55"	28"	126 lbs.
LA116	5" - 17"	7.55"	36"	133 lbs.
LA120	6" - 22"	10.00"	72"	376 lbs.
LA116H	16" - 40"	7.63"	36"	218 lbs.
LA116HX	30-1/8" - 65-7/8"	7.56"	36"	238 lbs.

Fishing Magnets

These can be used to retrieve debris with magnetic properties. The Magnum™ Magnet can be run as fishing magnet or in advance, to remove debris that could adversely affect a tools performance.

The Magnet is constructed with one massive magnet element. The elements are specially designed to make it highly magnetic and stronger than regular magnets. With the use of one large magnet element, compared to other fishing magnet with several small elements, ensures a larger magnet mass which gives the magnets a better lifting capacity. The Magnet is built as one piece to prevent the tool fr failing. Magnets are equipped with flow ports. Magnomets are available in most hole sizes.

- Magnets are designed to pick-up larger items such as crossovers, drill bits or cutters.
- One piece rugged construction
- Different sizes from 1,50" up to 8,3" OD and 1000 kg lifting capacity.
- Wire line and API threads depending on size.
- Drill fluid Circulation ports



Float Valves

These useful devices are located inside a crossover and can be used to prevent leakage of drill fluid from the drill string when making connections, especially when the exit point is above entry point.

SlimDril modify these valves to accept a wireline so they can be used during pilot and reaming stages.

They can also be used to replace a blank sub allowing fluid to be pumped from both entry and exit side.

A full range of sizes from 3" to 8" diameter available.



Bentonite

Grease & Lubricants

Crimping Equipment

Other Products & Services

Make & Break Torque Services

Guidance, project advice, CAD drawings & Engineer Hire

Orienting Subs & Crossover Subs

Drill wire & Drilling fluid



SlimDril's new premises is situated in Lowestoft in the county of Suffolk which is the most easterly point in the UK.

We are within close proximity to two international airports. Norwich (NWI) is only 35 miles and London Stansted (STN) is 100 miles from us.

The national railway network also serves Lowestoft and nearby Great Yarmouth.



SlimDril work with many Transport Companies across the country in which we can offer National, Europeans and global shipments to suit our customer needs.

Our Hauliers can offer next day delivery, pallet services and hot shot same day services, deliveries to HS2 sites with our FORS registered supplier and a daily trunker service from East Anglia to Aberdeen. We also have our own vehicle fleet for more local transport requirements.





Unit 6 & 7 Leyland Court – Lowestoft – Suffolk – NR32 2EP

T. + 44 1493 656 145

E. enquiries@slimdril.com

W. www.slimdril.com

 www.linkedin.com/company/slimdril-international



CALL US NOW: TEL +44 (0) 1493 656145

